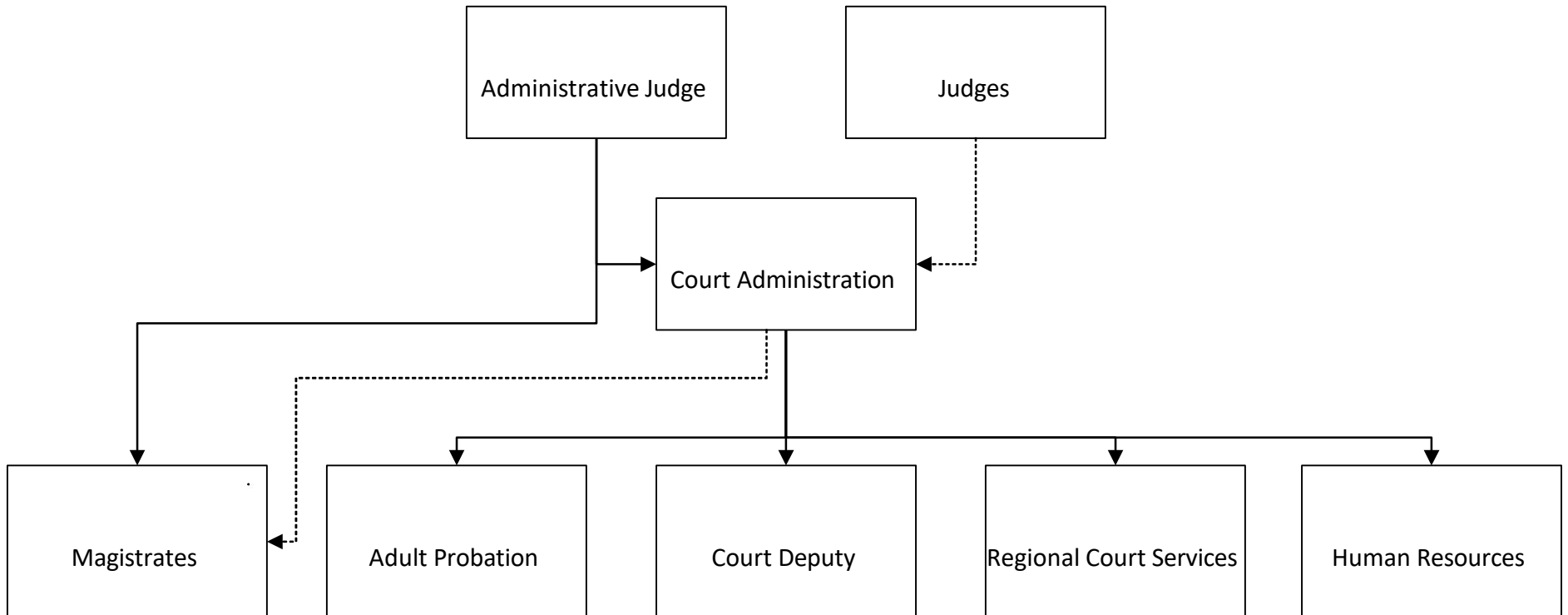


# Table of Organization

## Lucas County Court of Common Pleas, General Division

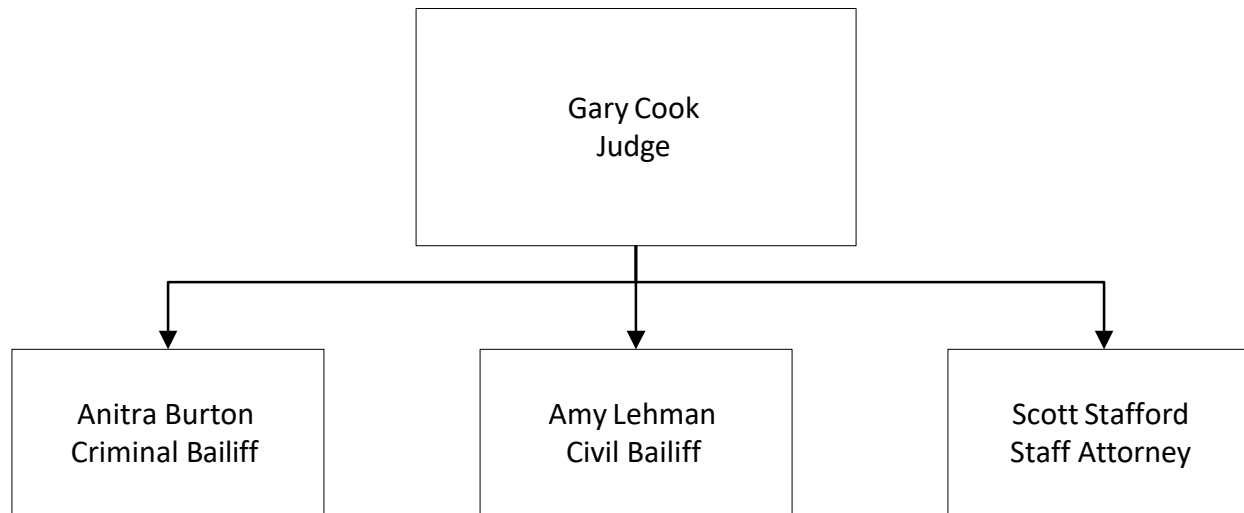
<b>Table of Contents</b>	<b>Page</b>
<a href="#"><u>Overview</u></a> .....	2
<a href="#"><u>Courtrooms</u></a> .....	3 – 12
<a href="#"><u>Court Administration</u></a> .....	13 – 16
<a href="#"><u>Magistrates</u></a> .....	17
<a href="#"><u>Human Resources</u></a> .....	18
<a href="#"><u>Court Deputy</u></a> .....	19
<a href="#"><u>Adult Probation</u></a> .....	20 - 29
<a href="#"><u>Regional Court Services</u></a> .....	30 - 35

**LUCAS COUNTY COURT OF COMMON PLEAS  
TABLE OF ORGANIZATION**



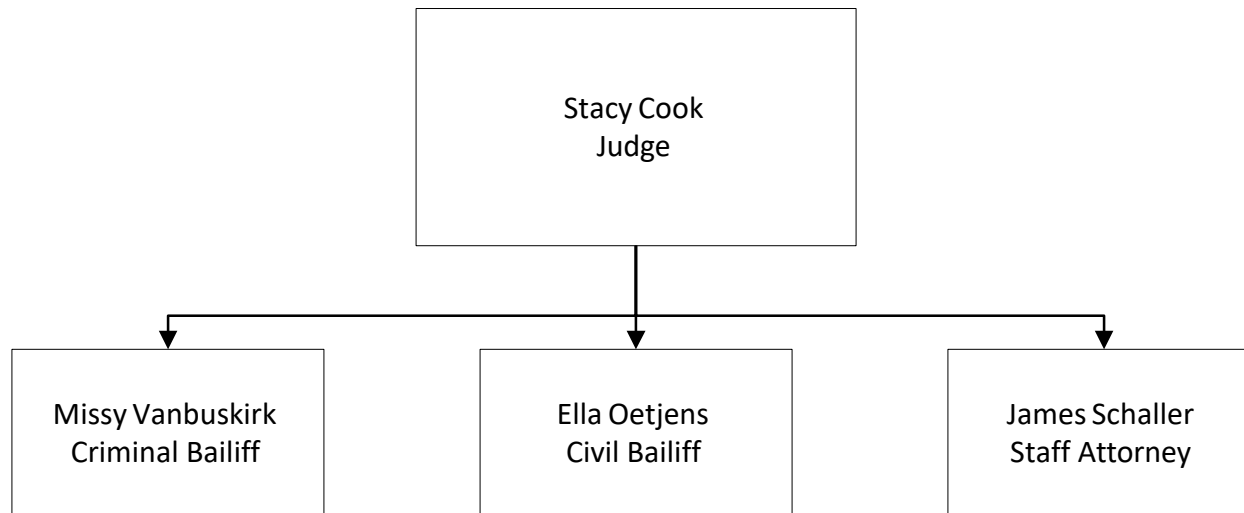
[Return to Table of Contents](#)

**LUCAS COUNTY COURT OF COMMON PLEAS  
TABLE OF ORGANIZATION  
COURTROOM 1**



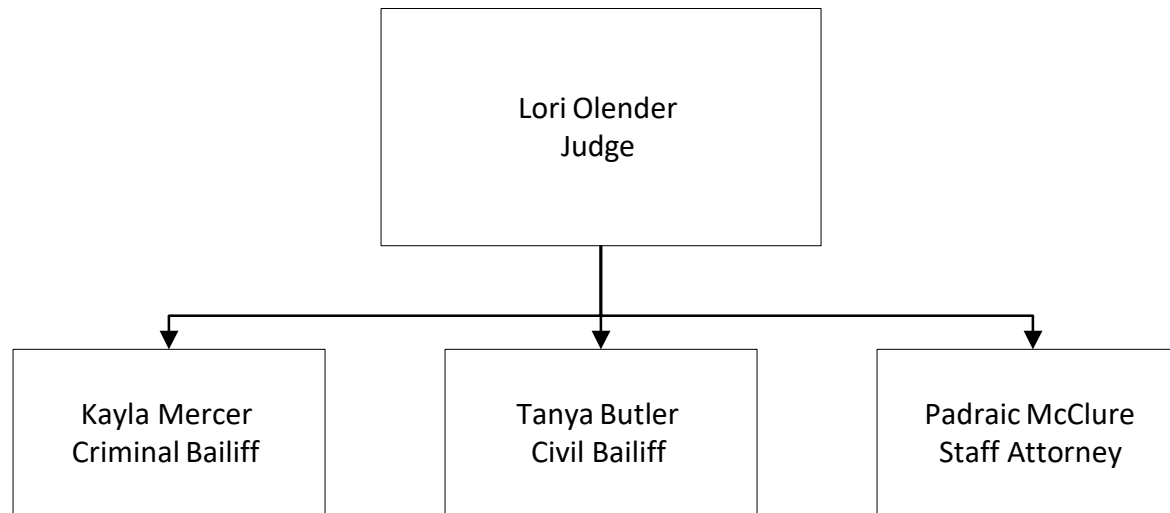
[Return to Table of Contents](#)

**LUCAS COUNTY COURT OF COMMON PLEAS  
TABLE OF ORGANIZATION  
COURTROOM 2**



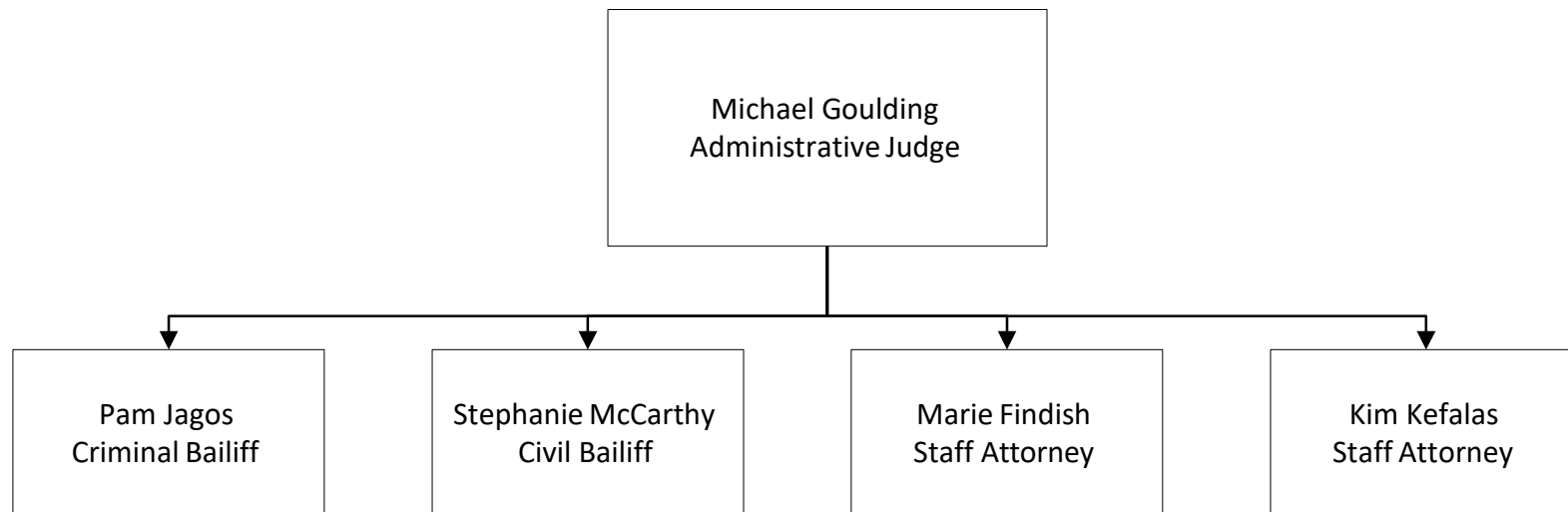
[Return to Table of Contents](#)

**LUCAS COUNTY COURT OF COMMON PLEAS  
TABLE OF ORGANIZATION  
COURTROOM 3**



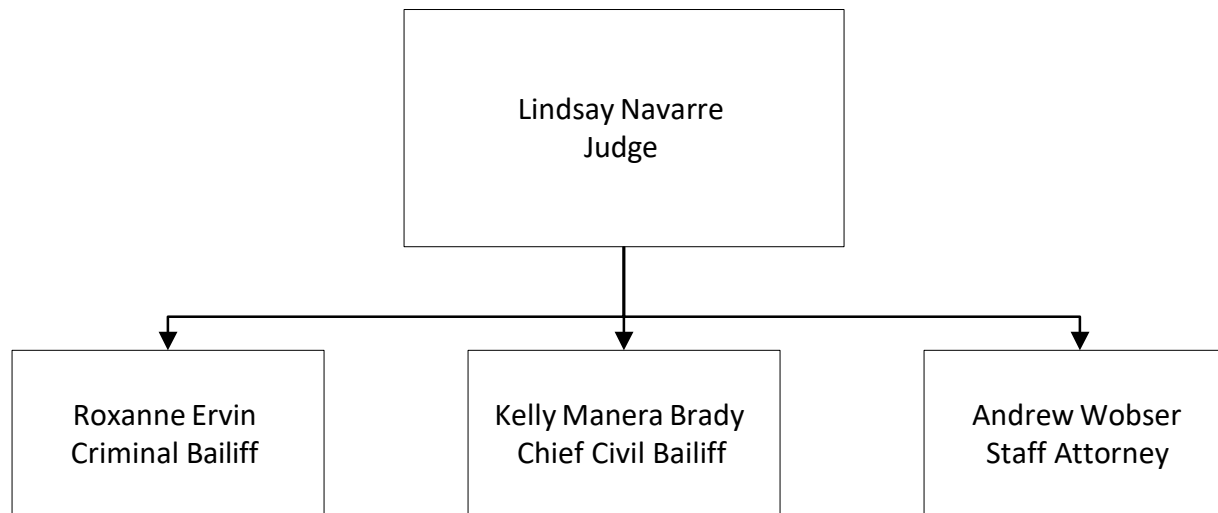
[Return to Table of Contents](#)

**LUCAS COUNTY COURT OF COMMON PLEAS  
TABLE OF ORGANIZATION  
COURTROOM 4**



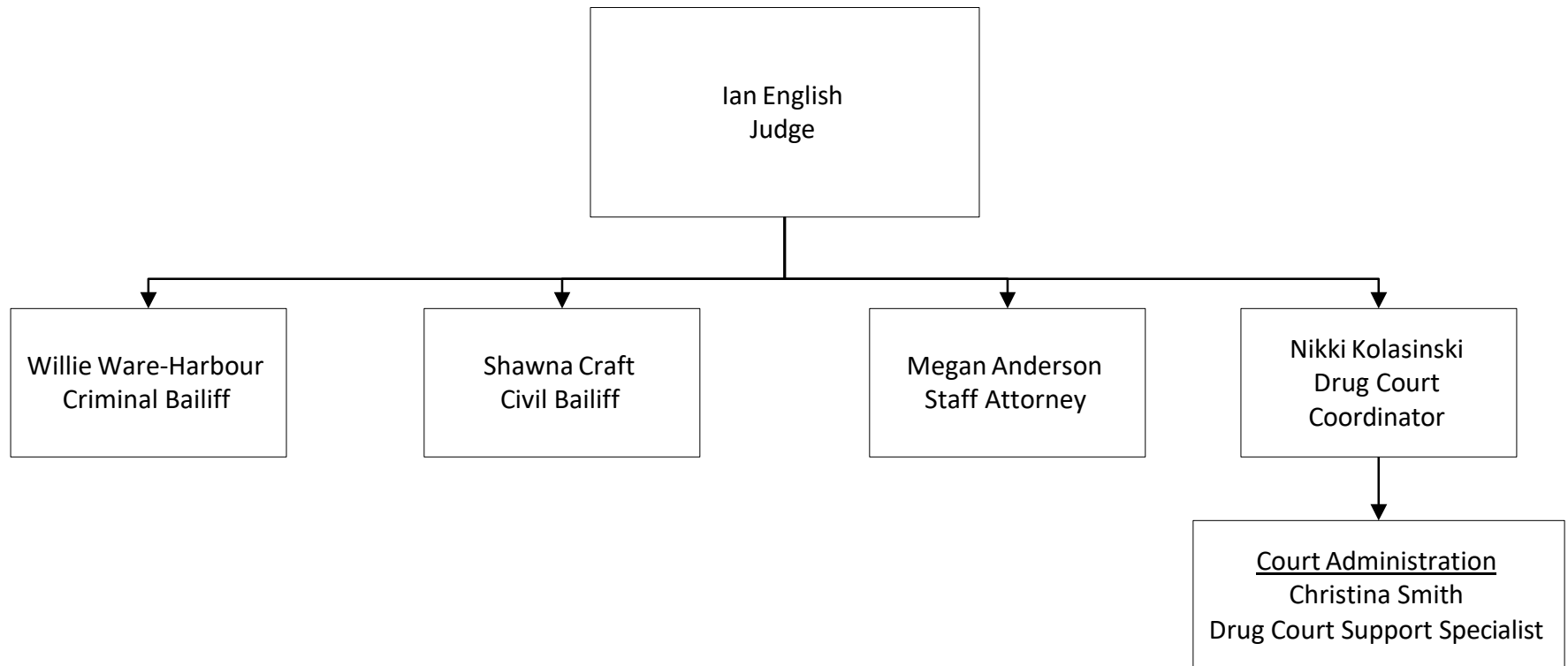
[Return to Table of Contents](#)

**LUCAS COUNTY COURT OF COMMON PLEAS  
TABLE OF ORGANIZATION  
COURTROOM 5**



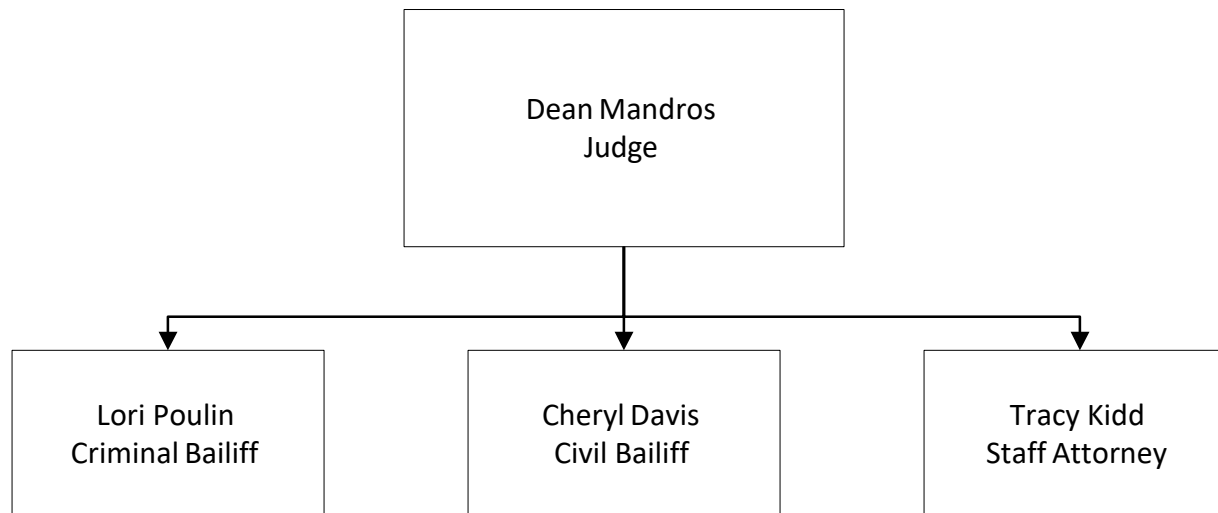
[Return to Table of Contents](#)

**LUCAS COUNTY COURT OF COMMON PLEAS  
TABLE OF ORGANIZATION  
COURTROOM 6**



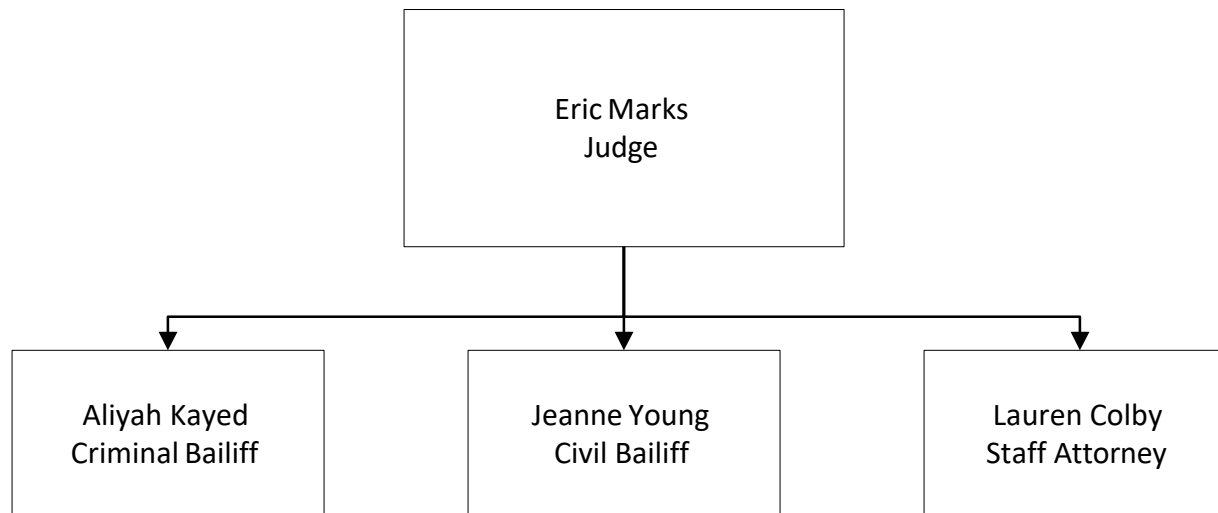
[Return to Table of Contents](#)

**LUCAS COUNTY COURT OF COMMON PLEAS  
TABLE OF ORGANIZATION  
COURTROOM 7**



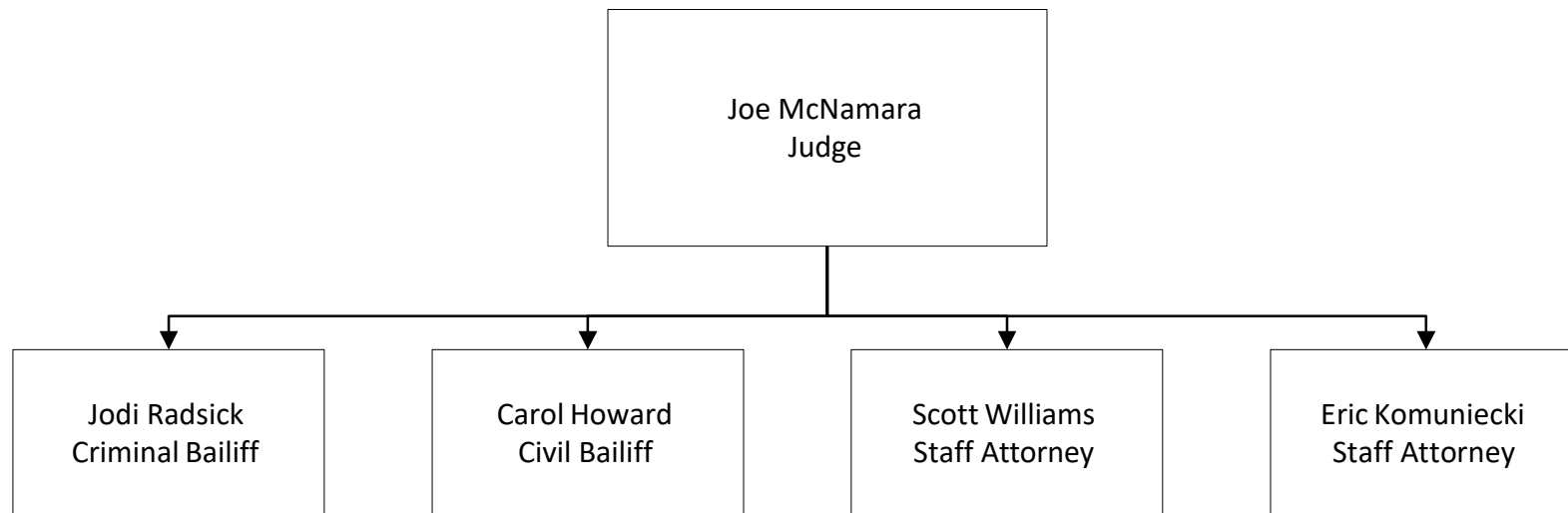
[Return to Table of Contents](#)

**LUCAS COUNTY COURT OF COMMON PLEAS  
TABLE OF ORGANIZATION  
COURTROOM 8**



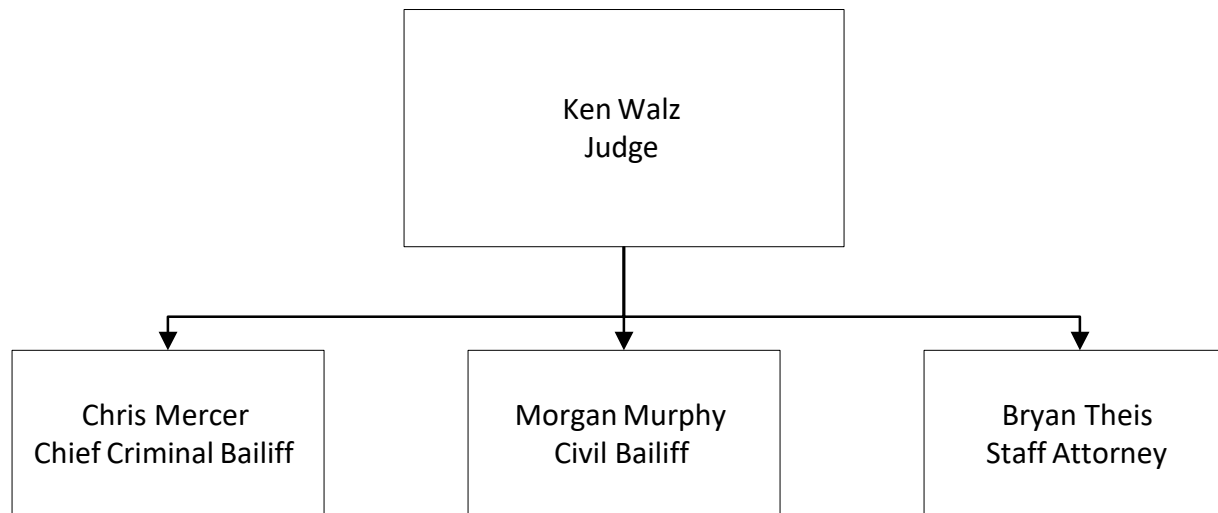
[Return to Table of Contents](#)

**LUCAS COUNTY COURT OF COMMON PLEAS  
TABLE OF ORGANIZATION  
COURTROOM 9**



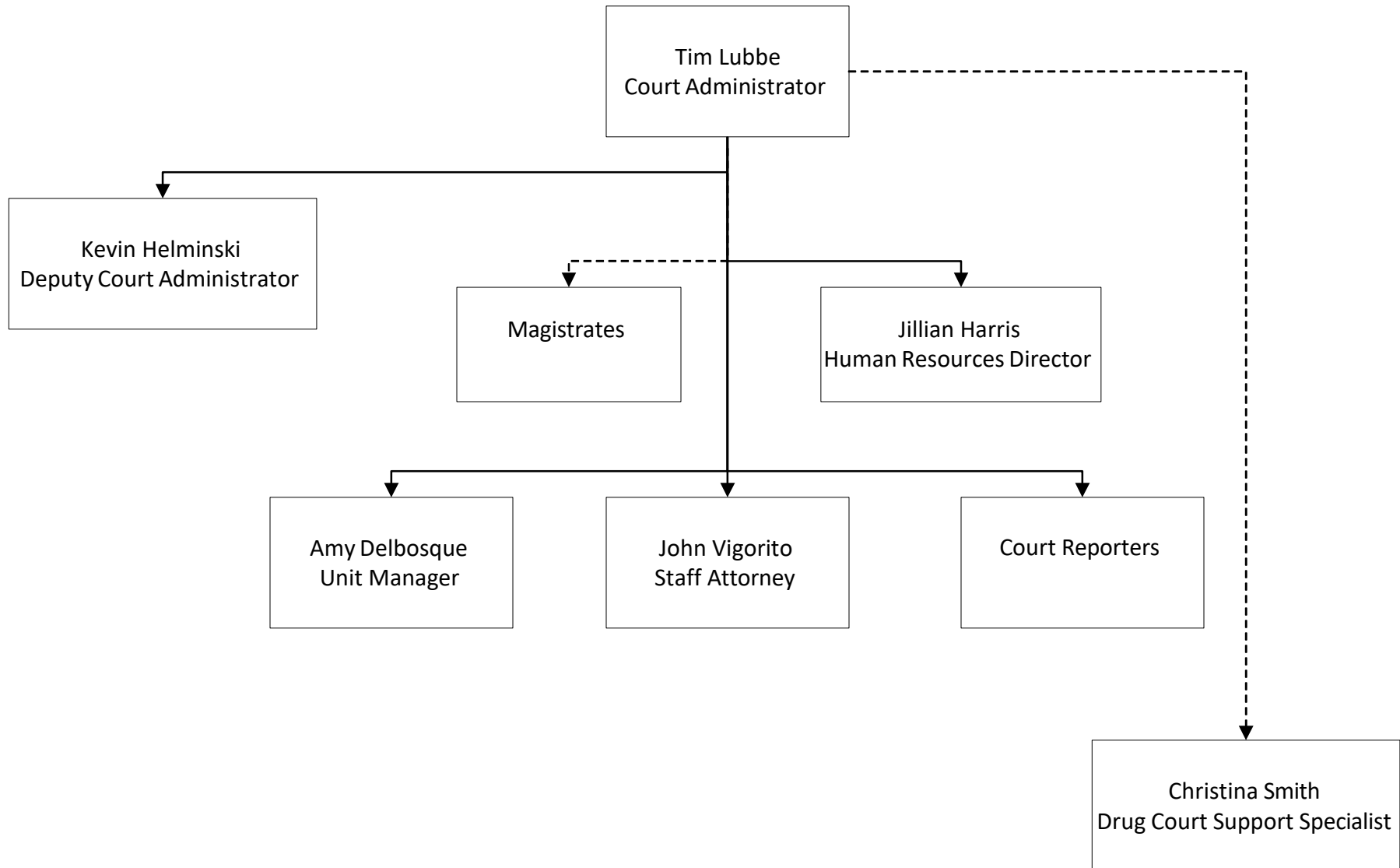
[Return to Table of Contents](#)

**LUCAS COUNTY COURT OF COMMON PLEAS  
TABLE OF ORGANIZATION  
COURTROOM 10**



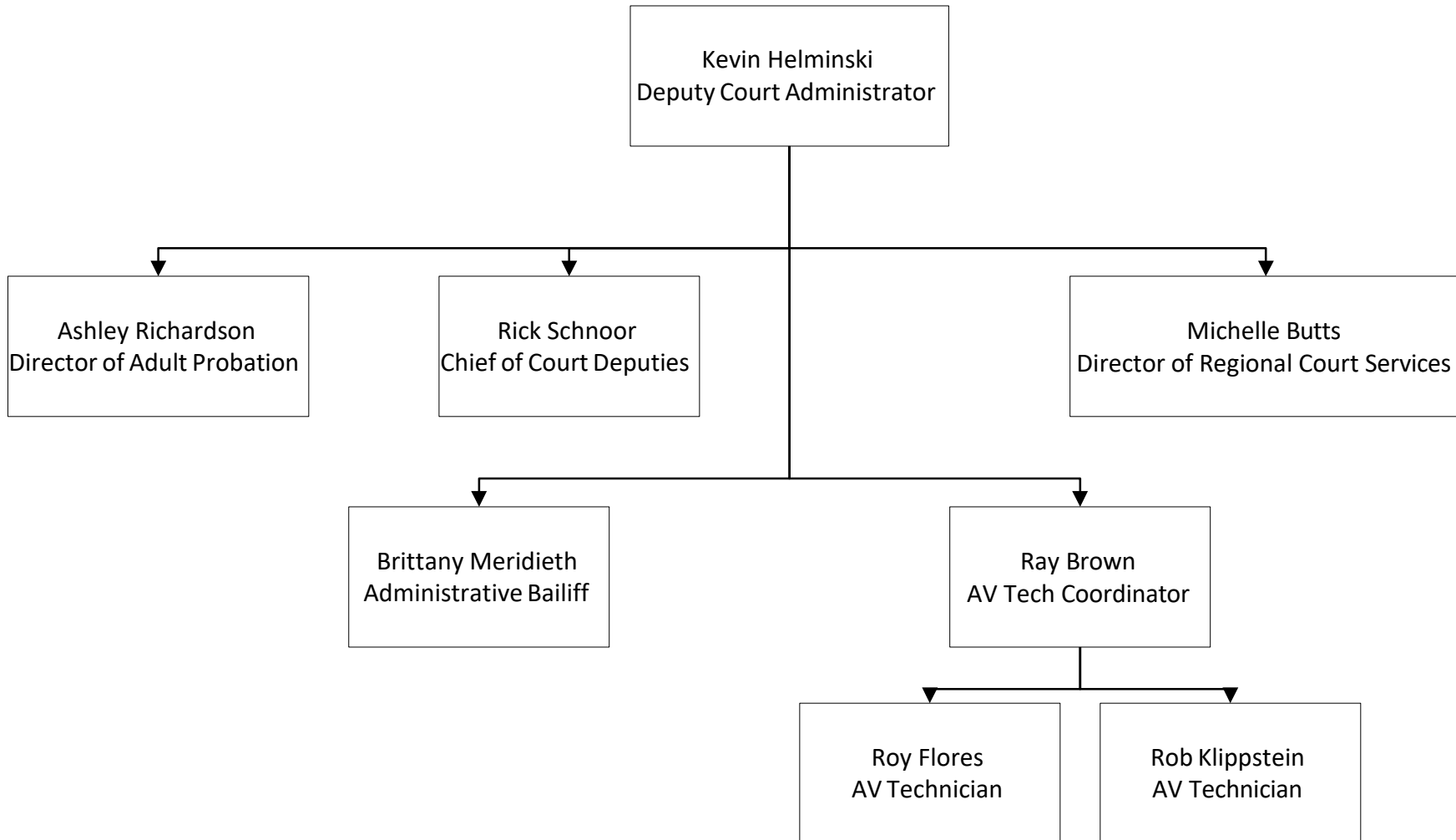
[Return to Table of Contents](#)

**LUCAS COUNTY COURT OF COMMON PLEAS  
TABLE OF ORGANIZATION  
COURT ADMINISTRATION**



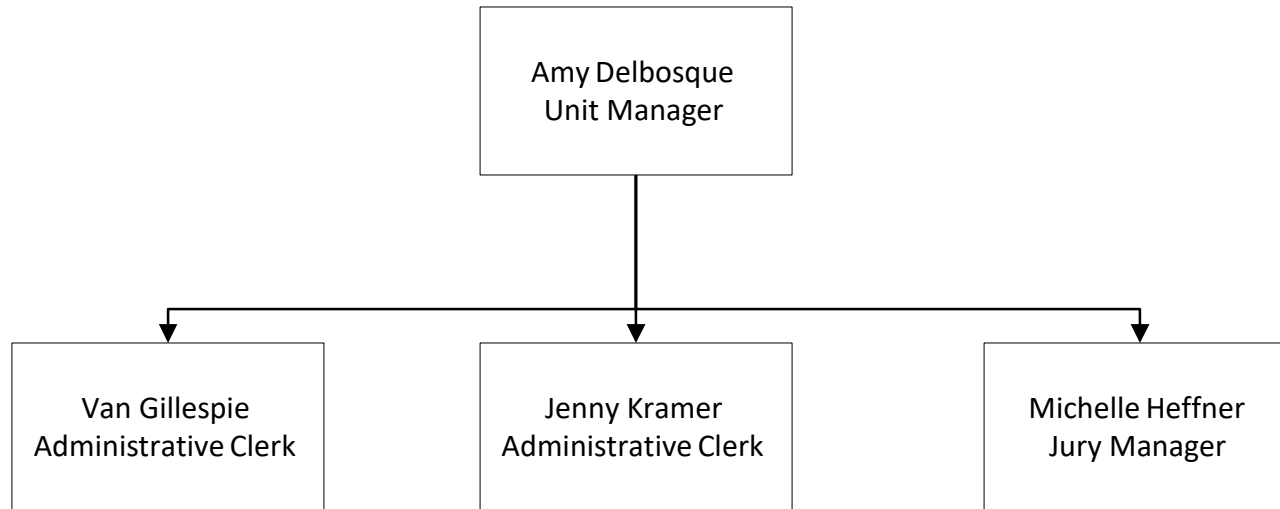
[Return to Table of Contents](#)

**LUCAS COUNTY COURT OF COMMON PLEAS  
TABLE OF ORGANIZATION  
COURT ADMINISTRATION**



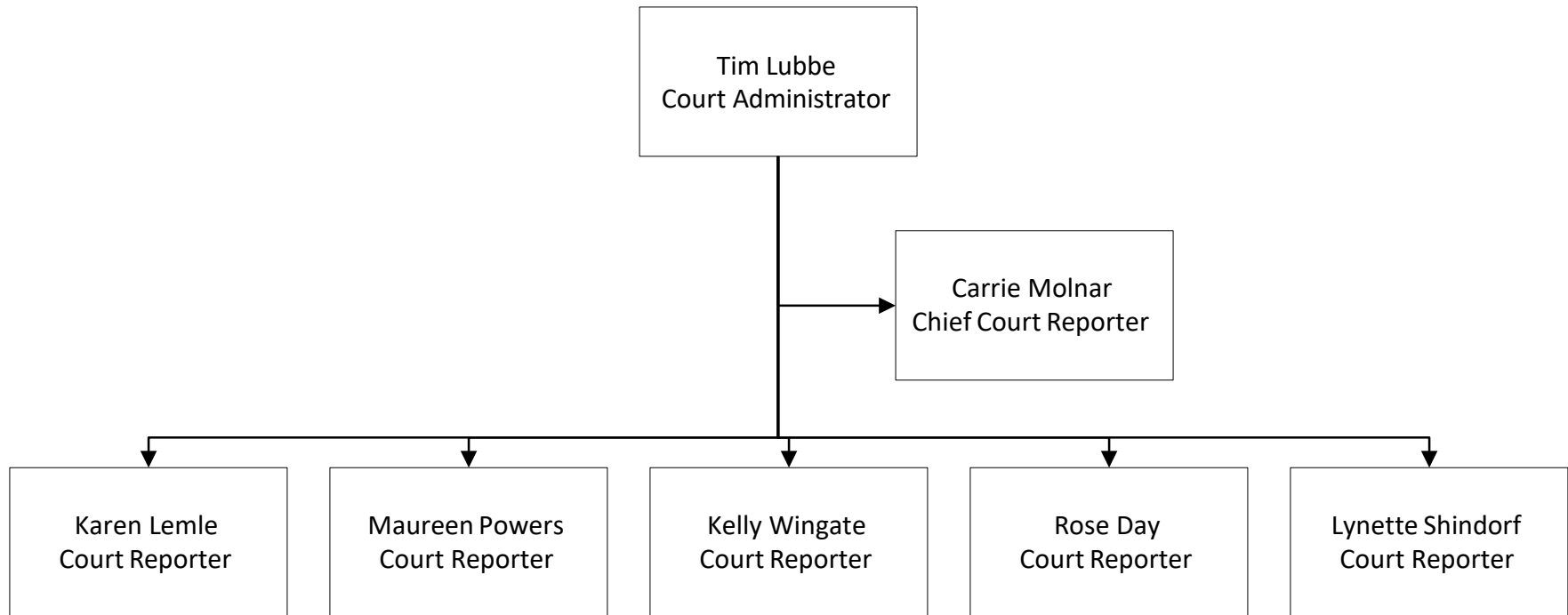
[Return to Table of Contents](#)

**LUCAS COUNTY COURT OF COMMON PLEAS  
TABLE OF ORGANIZATION  
COURT ADMINISTRATION**



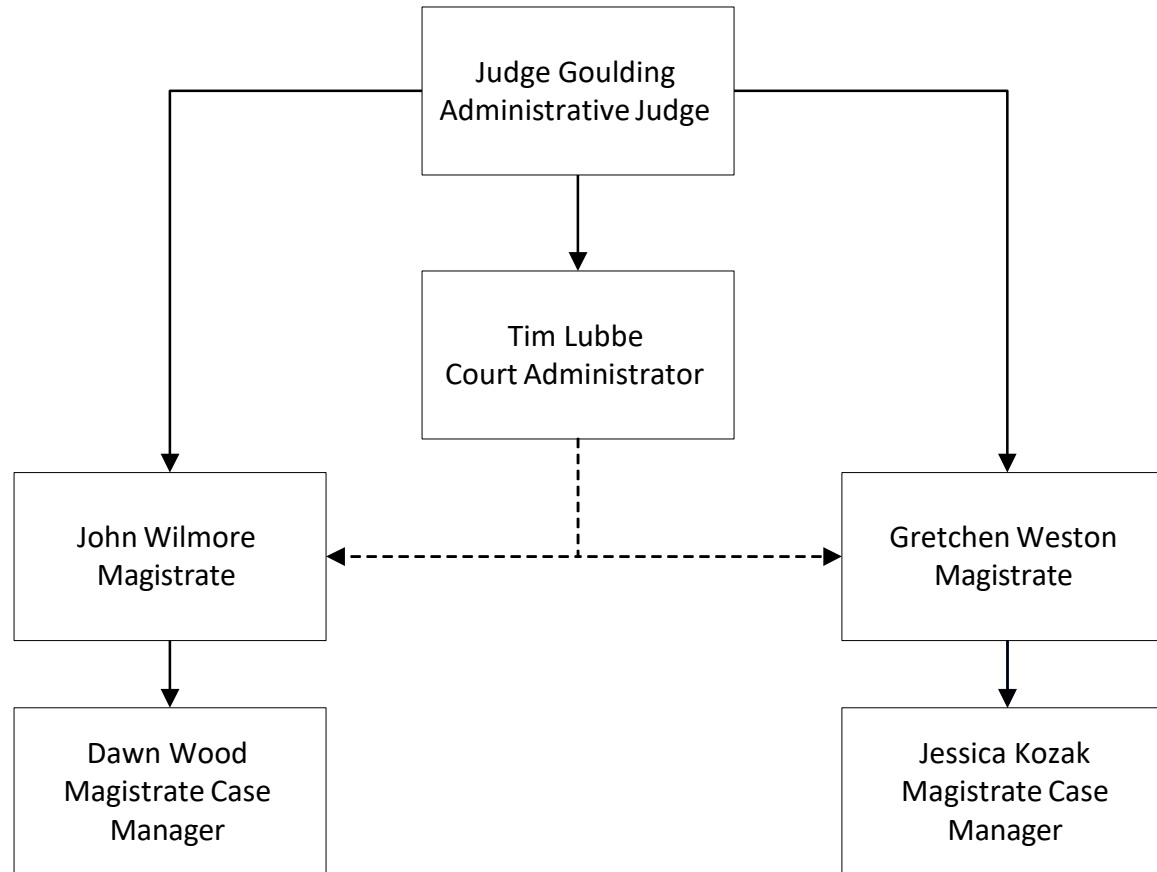
[Return to Table of Contents](#)

**LUCAS COUNTY COURT OF COMMON PLEAS  
TABLE OF ORGANIZATION  
COURT ADMINISTRATION**



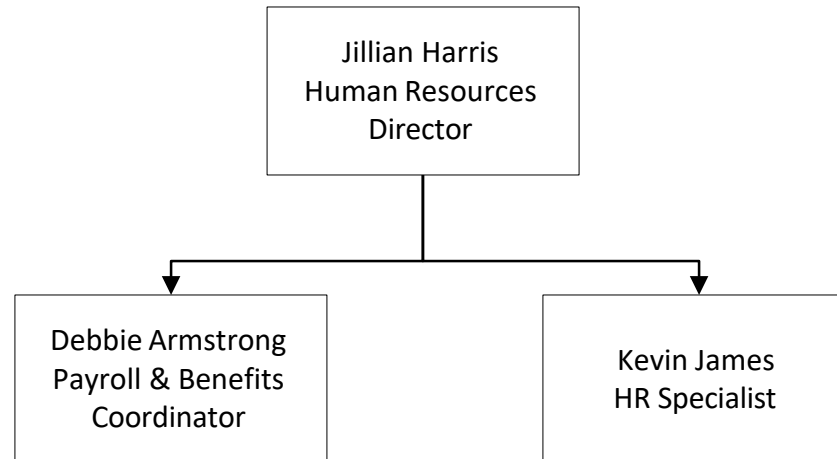
[Return to Table of Contents](#)

**LUCAS COUNTY COURT OF COMMON PLEAS  
TABLE OF ORGANIZATION  
MAGISTRATES**



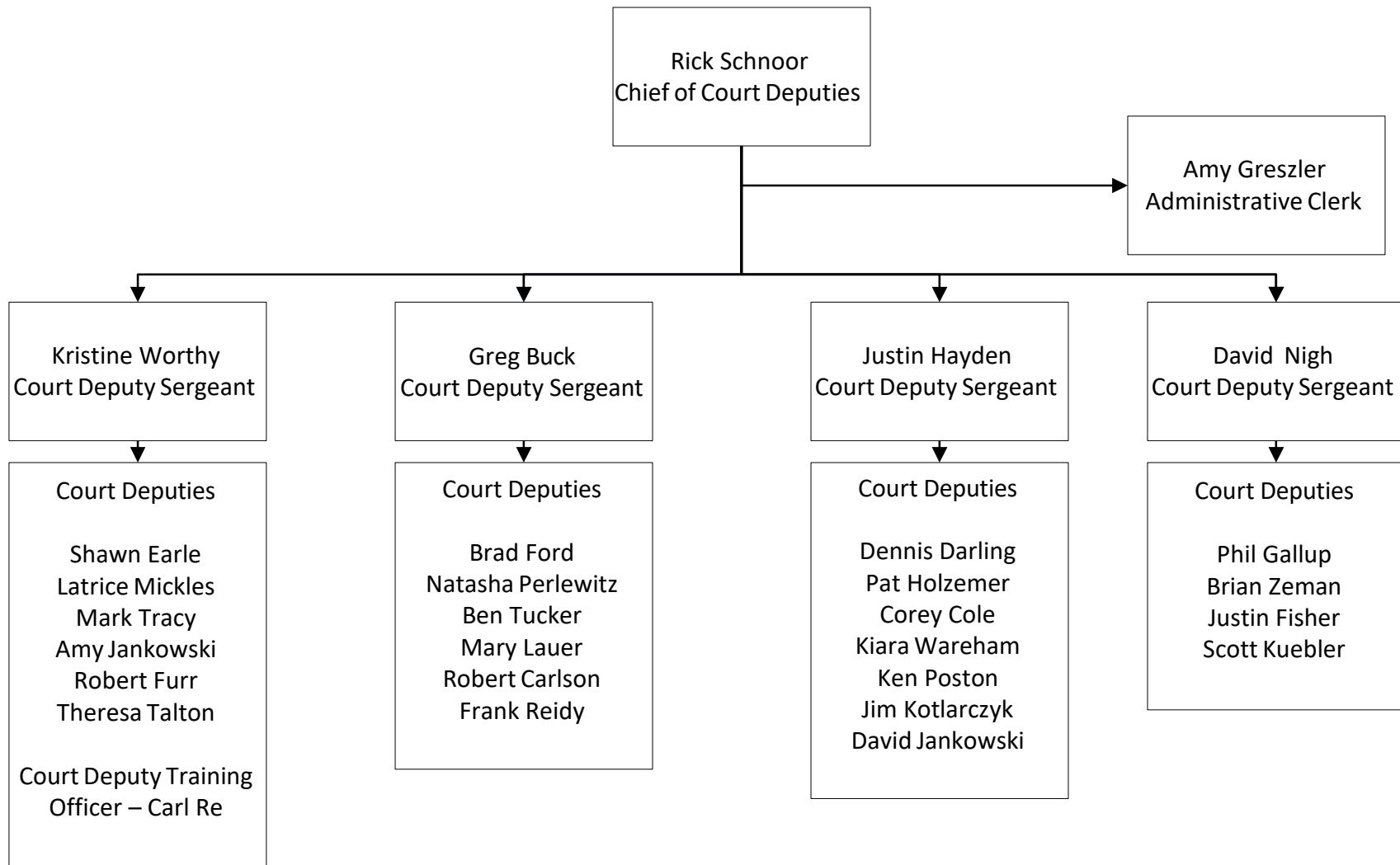
[Return to Table of Contents](#)

**LUCAS COUNTY COURT OF COMMON PLEAS  
TABLE OF ORGANIZATION  
HUMAN RESOURCES**



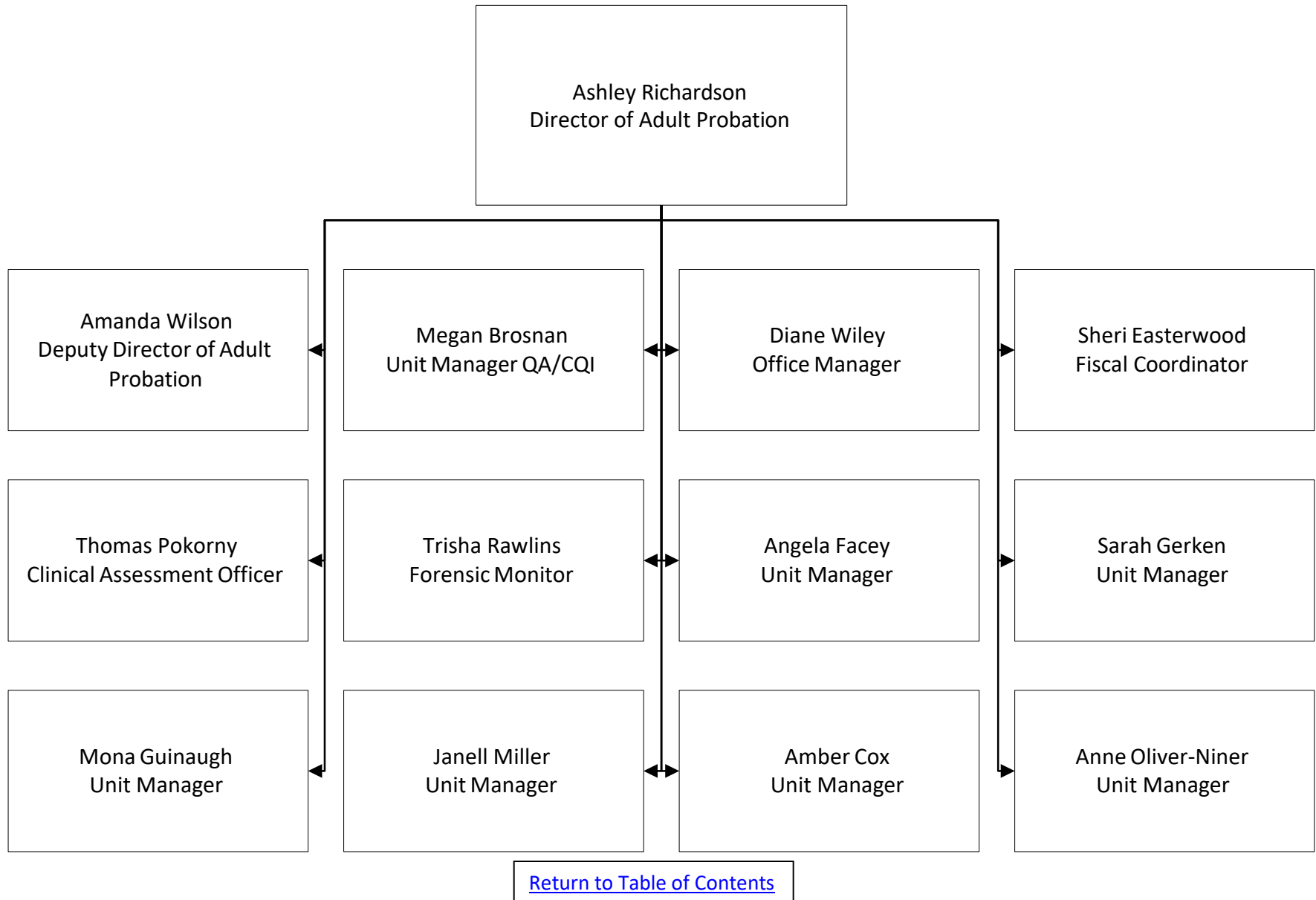
[Return to Table of Contents](#)

**LUCAS COUNTY COURT OF COMMON PLEAS  
TABLE OF ORGANIZATION  
COURT DEPUTY**

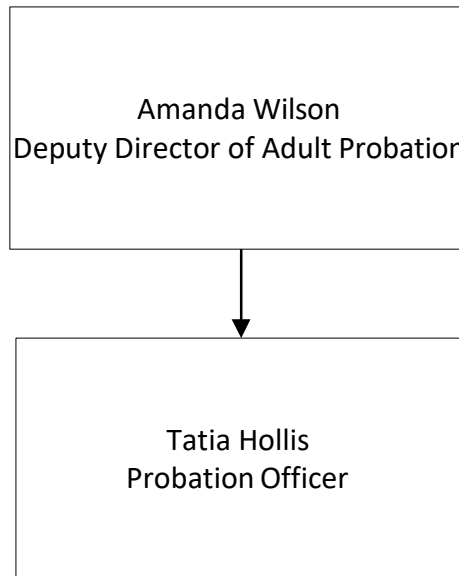


[Return to Table of Contents](#)

**LUCAS COUNTY COURT OF COMMON PLEAS  
TABLE OF ORGANIZATION  
ADULT PROBATION**

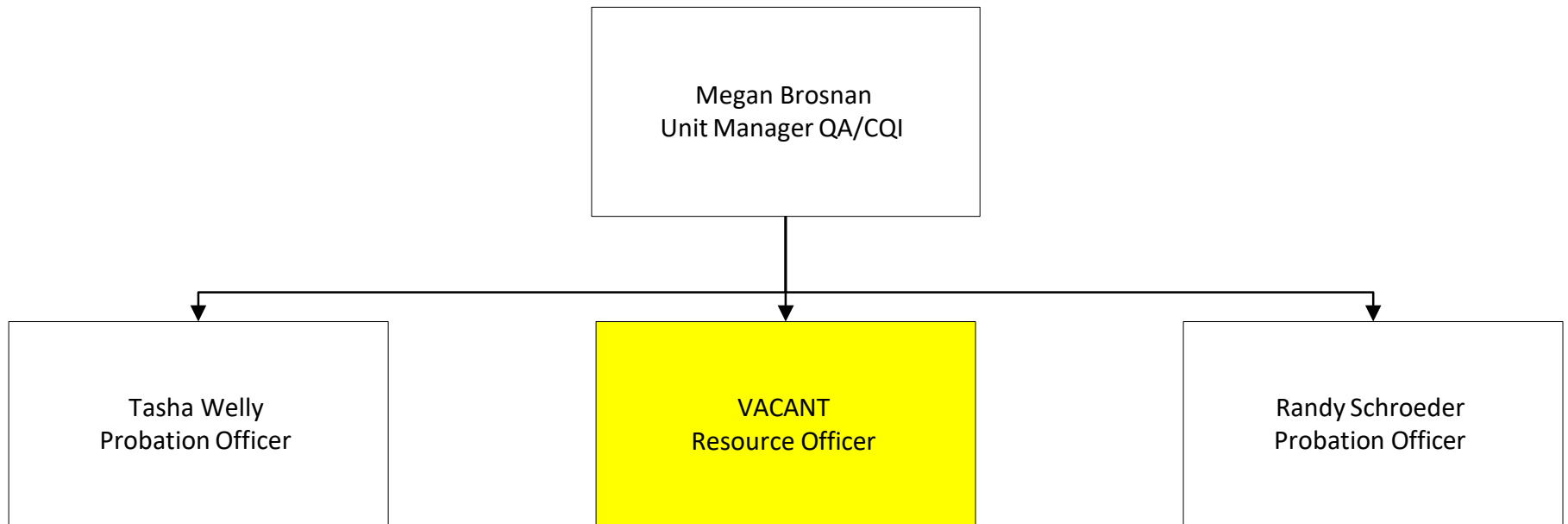


**LUCAS COUNTY COURT OF COMMON PLEAS  
TABLE OF ORGANIZATION  
ADULT PROBATION**



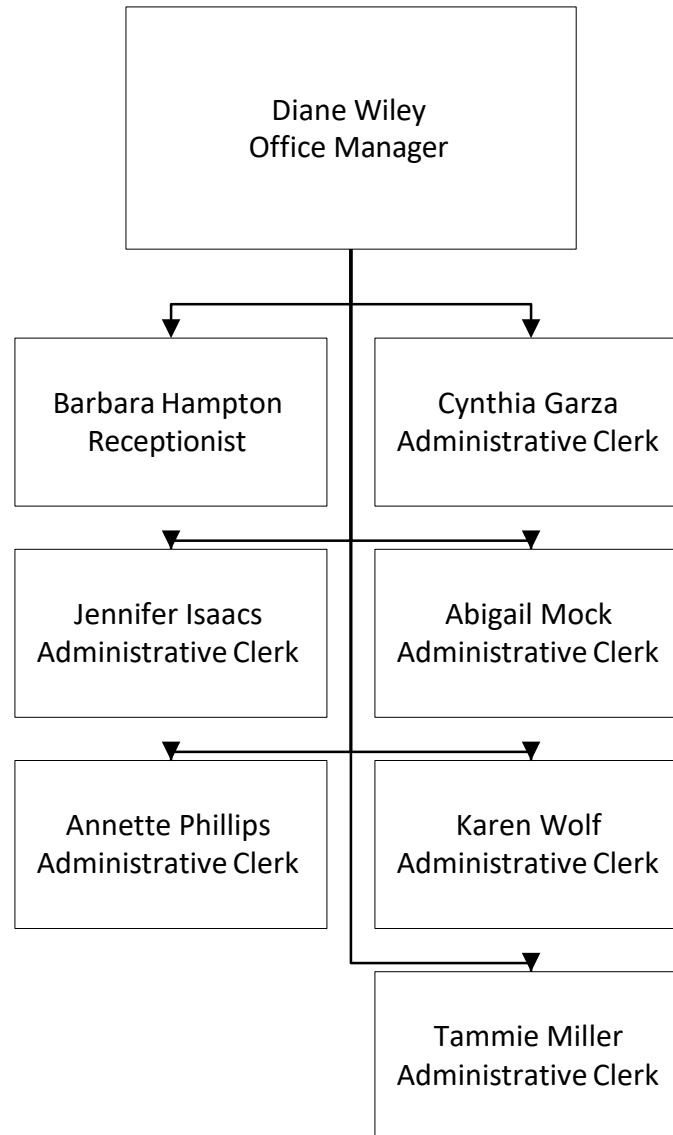
[Return to Table of Contents](#)

**LUCAS COUNTY COURT OF COMMON PLEAS  
TABLE OF ORGANIZATION  
ADULT PROBATION**



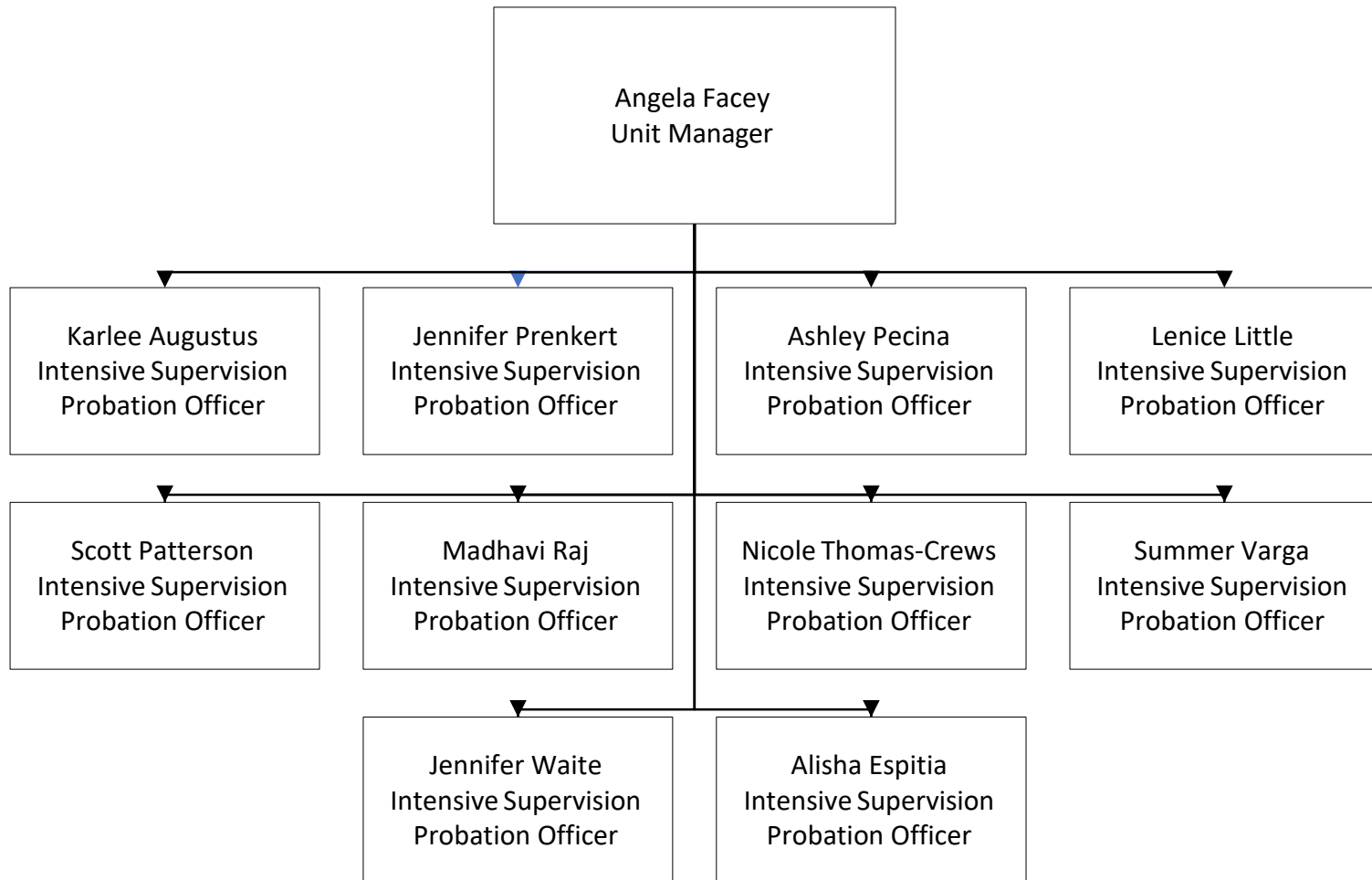
[Return to Table of Contents](#)

**LUCAS COUNTY COURT OF COMMON PLEAS  
TABLE OF ORGANIZATION  
ADULT PROBATION**



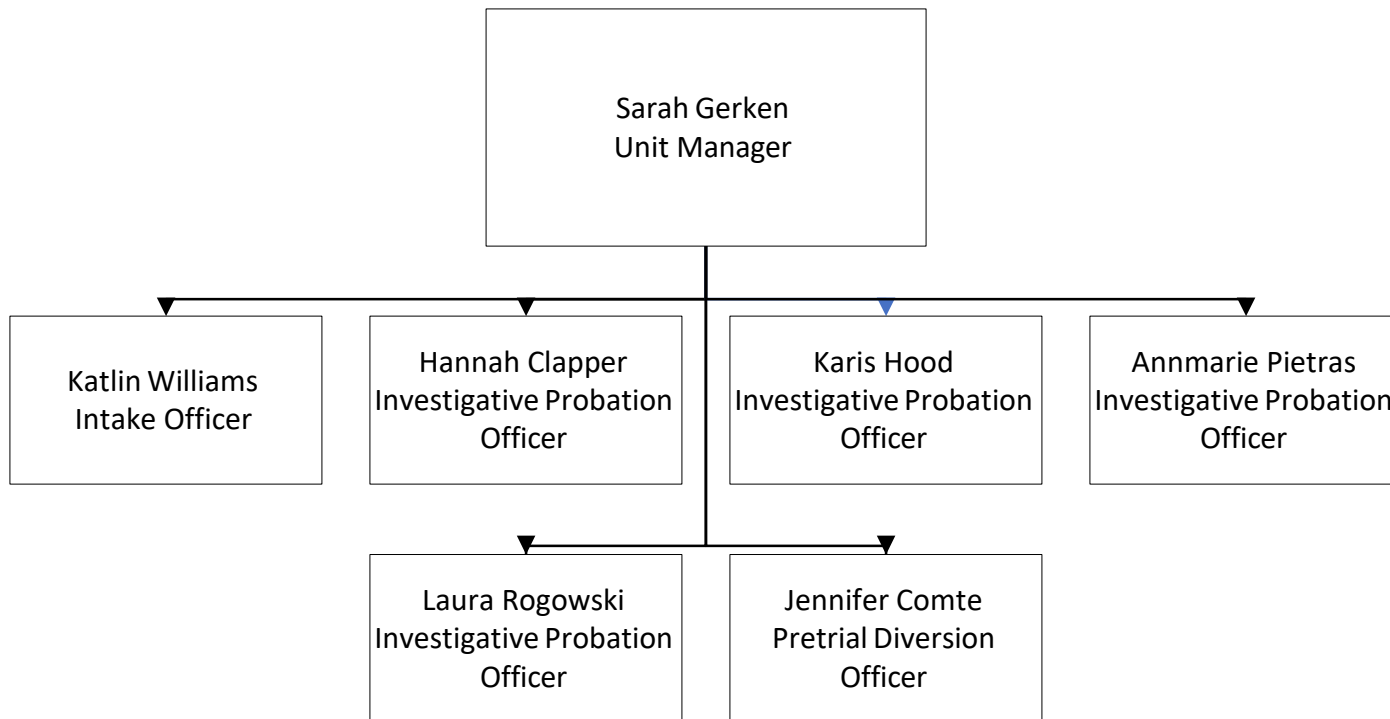
[Return to Table of Contents](#)

**LUCAS COUNTY COURT OF COMMON PLEAS  
TABLE OF ORGANIZATION  
ADULT PROBATION**



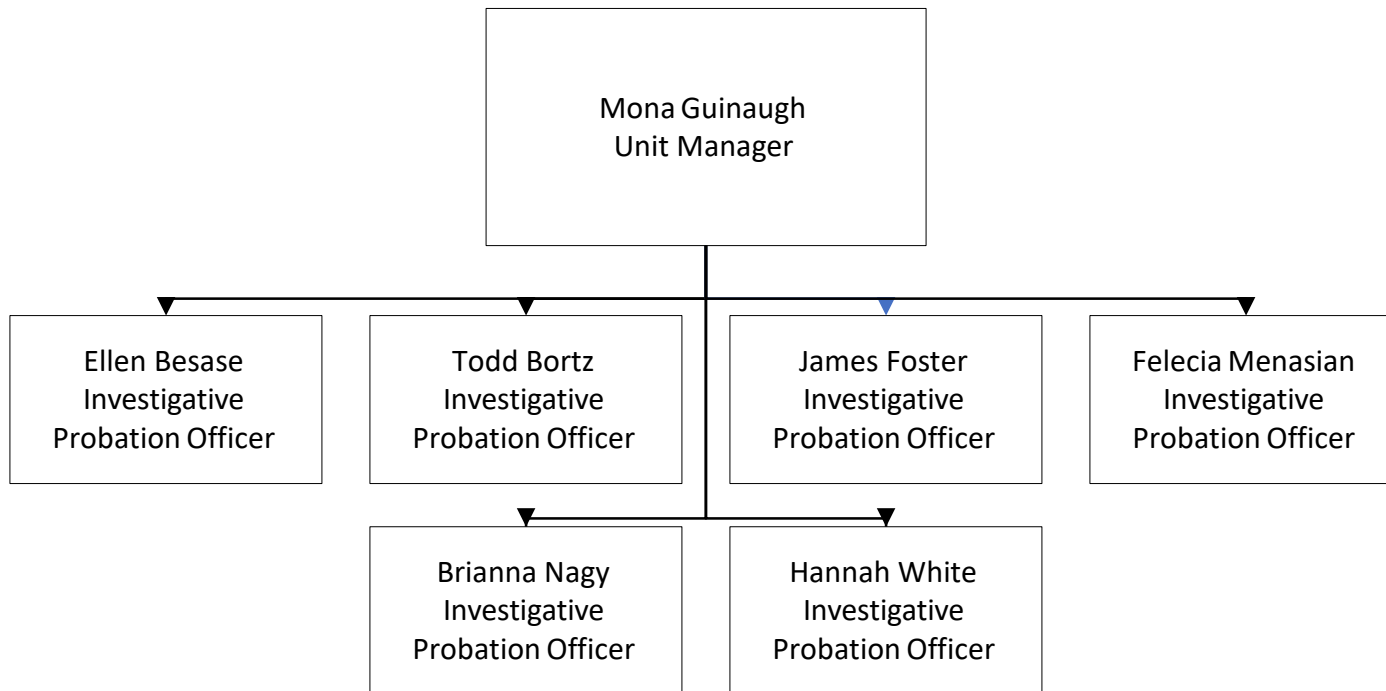
[Return to Table of Contents](#)

**LUCAS COUNTY COURT OF COMMON PLEAS  
TABLE OF ORGANIZATION  
ADULT PROBATION**



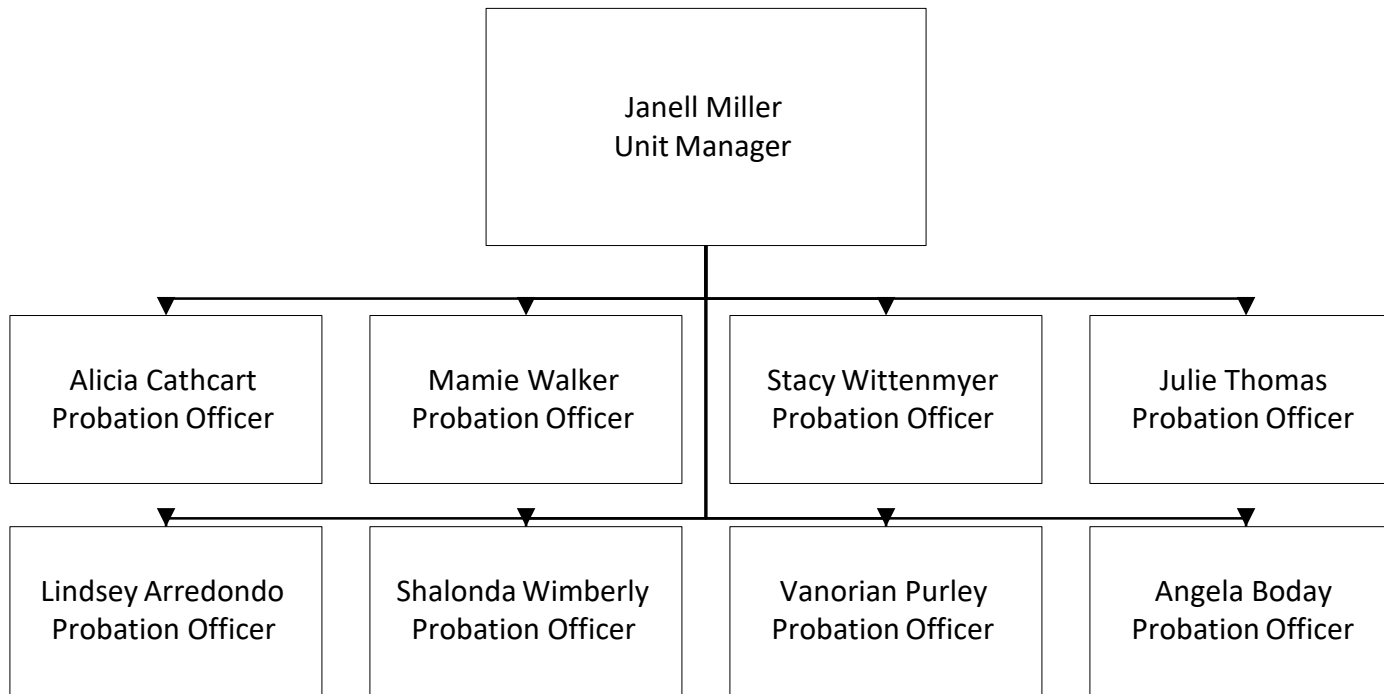
[Return to Table of Contents](#)

**LUCAS COUNTY COURT OF COMMON PLEAS  
TABLE OF ORGANIZATION  
ADULT PROBATION**



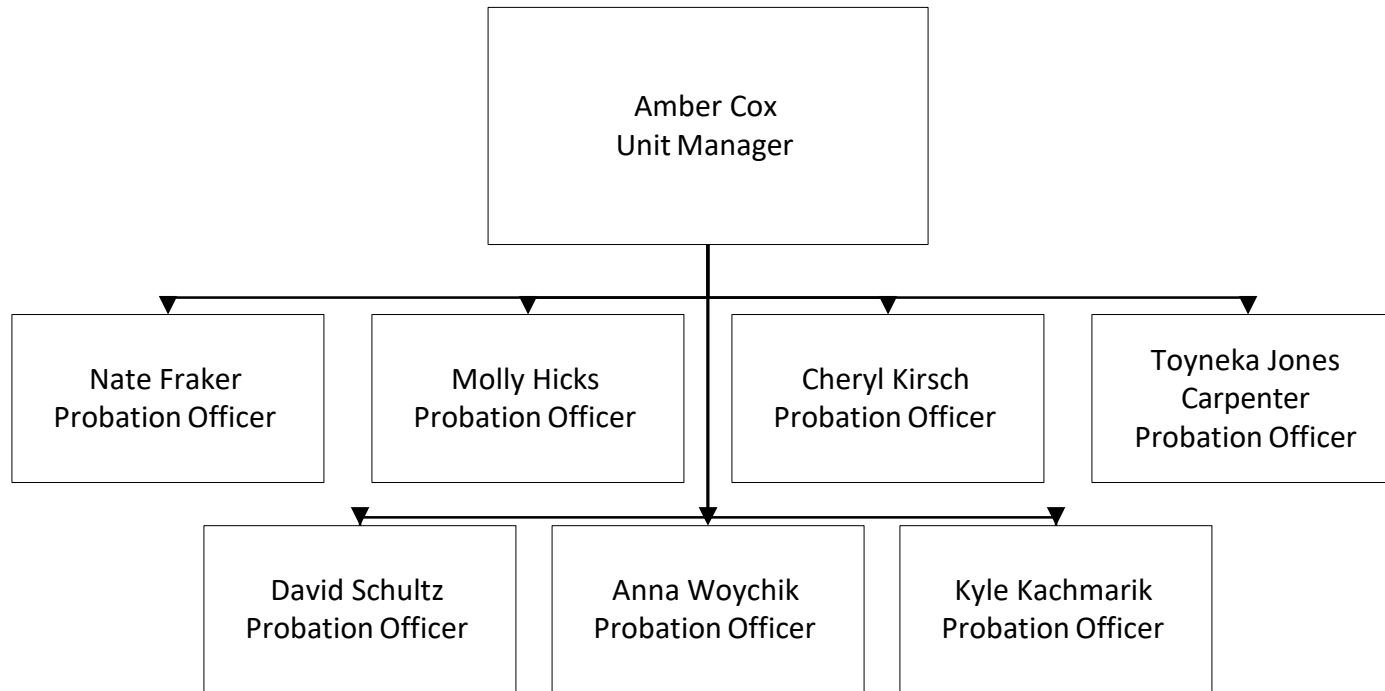
[Return to Table of Contents](#)

**LUCAS COUNTY COURT OF COMMON PLEAS  
TABLE OF ORGANIZATION  
ADULT PROBATION**



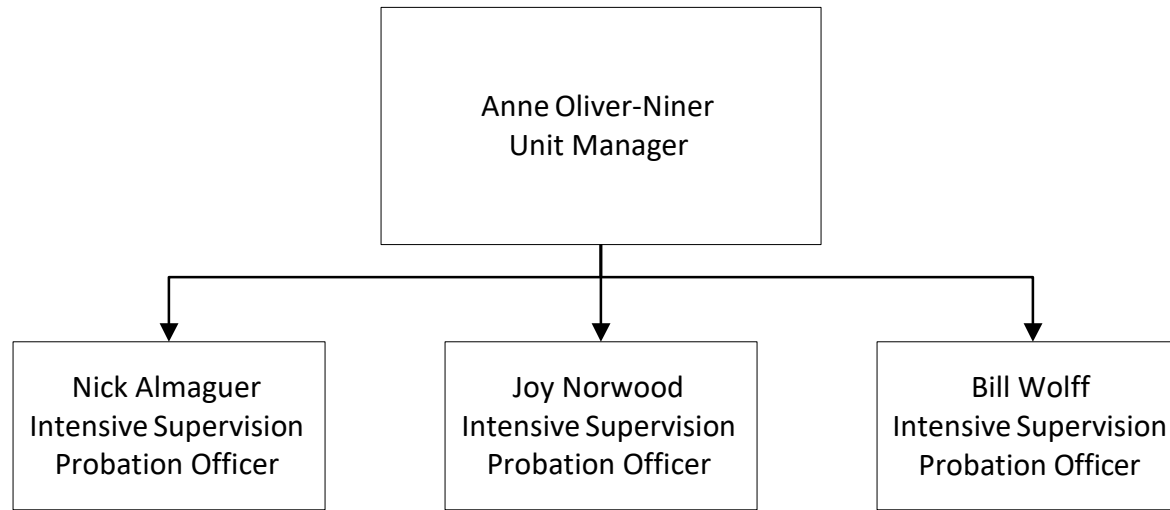
[Return to Table of Contents](#)

**LUCAS COUNTY COURT OF COMMON PLEAS  
TABLE OF ORGANIZATION  
ADULT PROBATION**



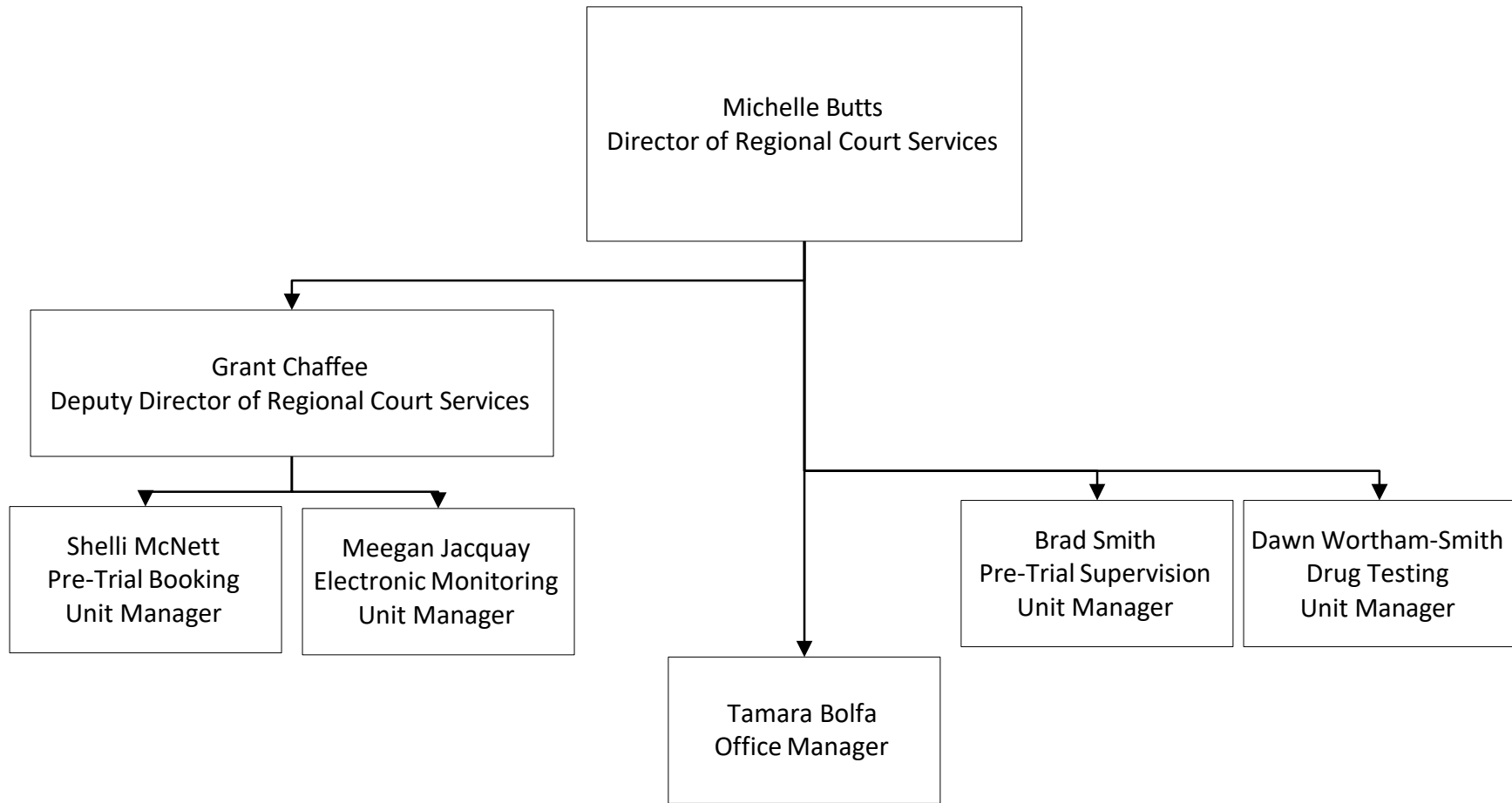
[Return to Table of Contents](#)

**LUCAS COUNTY COURT OF COMMON PLEAS  
TABLE OF ORGANIZATION  
ADULT PROBATION**



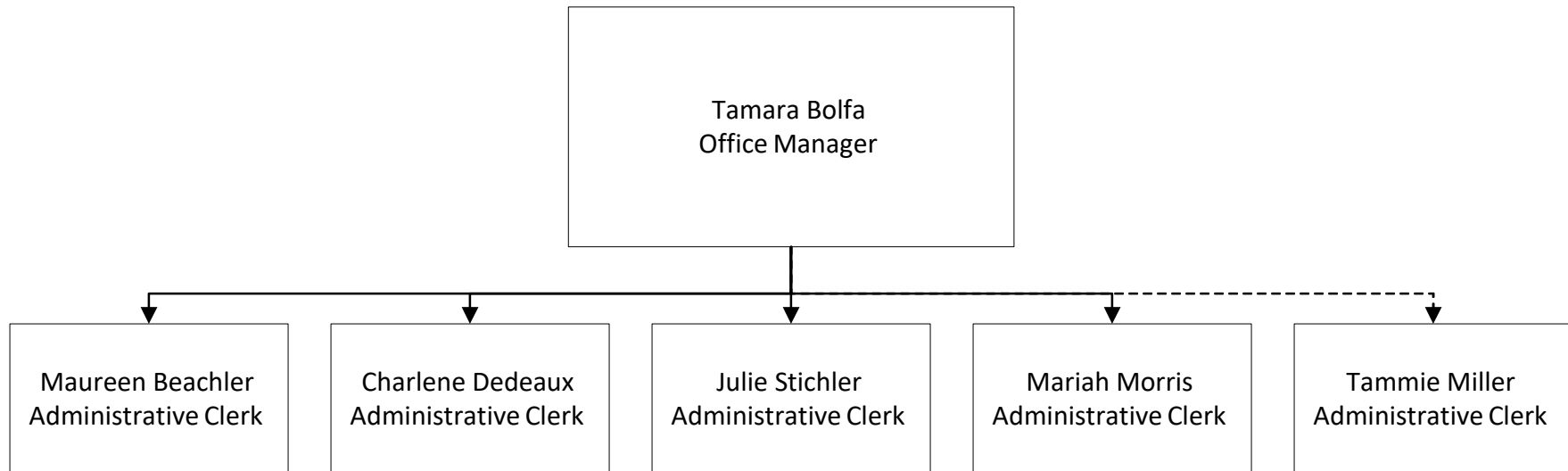
[Return to Table of Contents](#)

**LUCAS COUNTY COURT OF COMMON PLEAS  
TABLE OF ORGANIZATION  
REGIONAL COURT SERVICES**



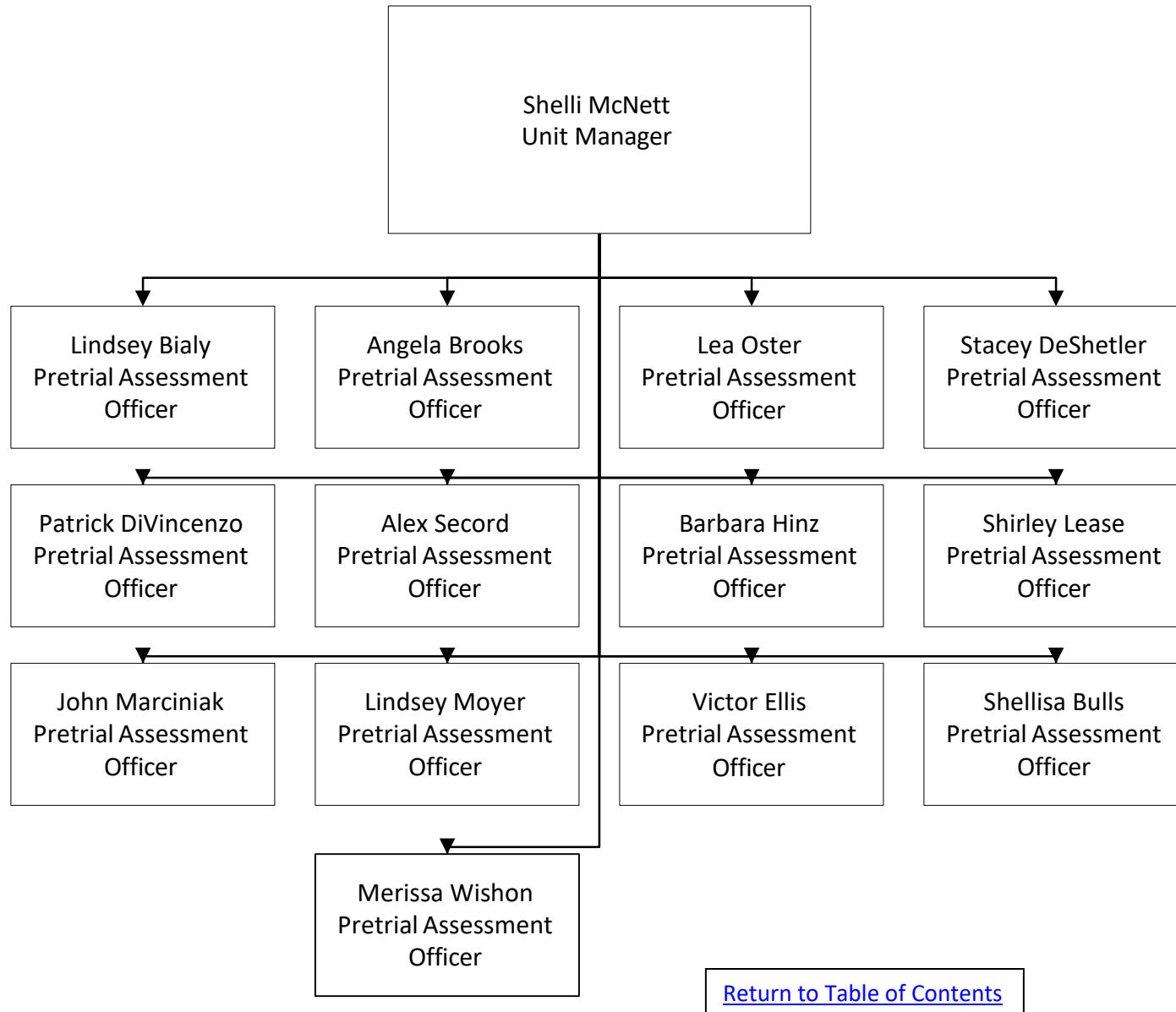
[Return to Table of Contents](#)

**LUCAS COUNTY COURT OF COMMON PLEAS  
TABLE OF ORGANIZATION  
REGIONAL COURT SERVICES**

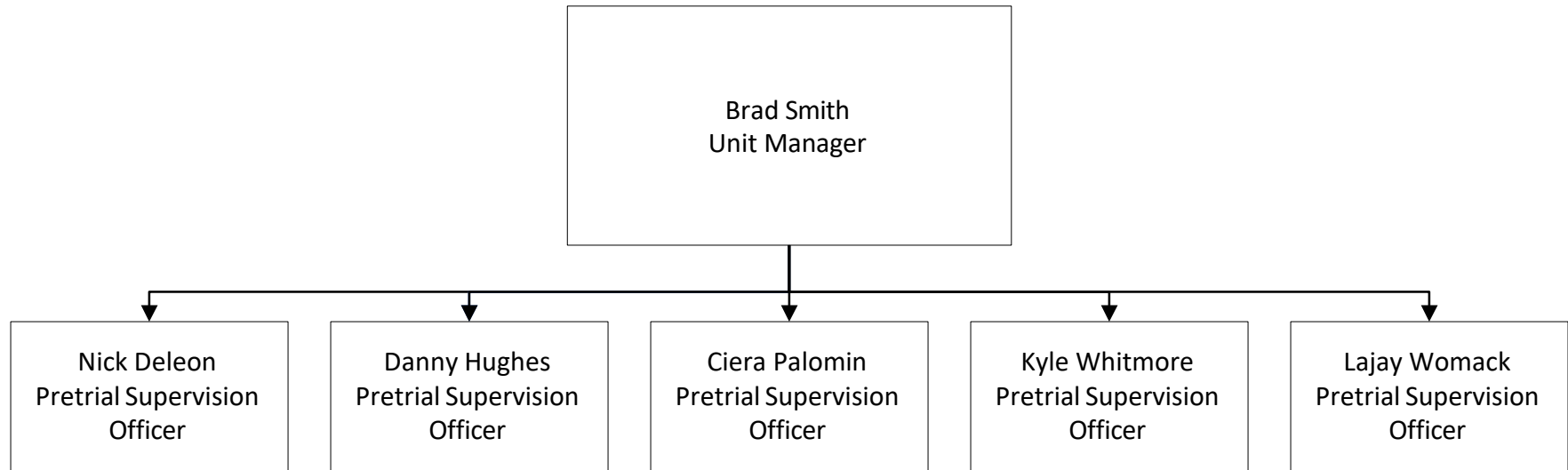


[Return to Table of Contents](#)

**LUCAS COUNTY COURT OF COMMON PLEAS  
TABLE OF ORGANIZATION  
REGIONAL COURT SERVICES  
PRE-TRIAL BOOKING**

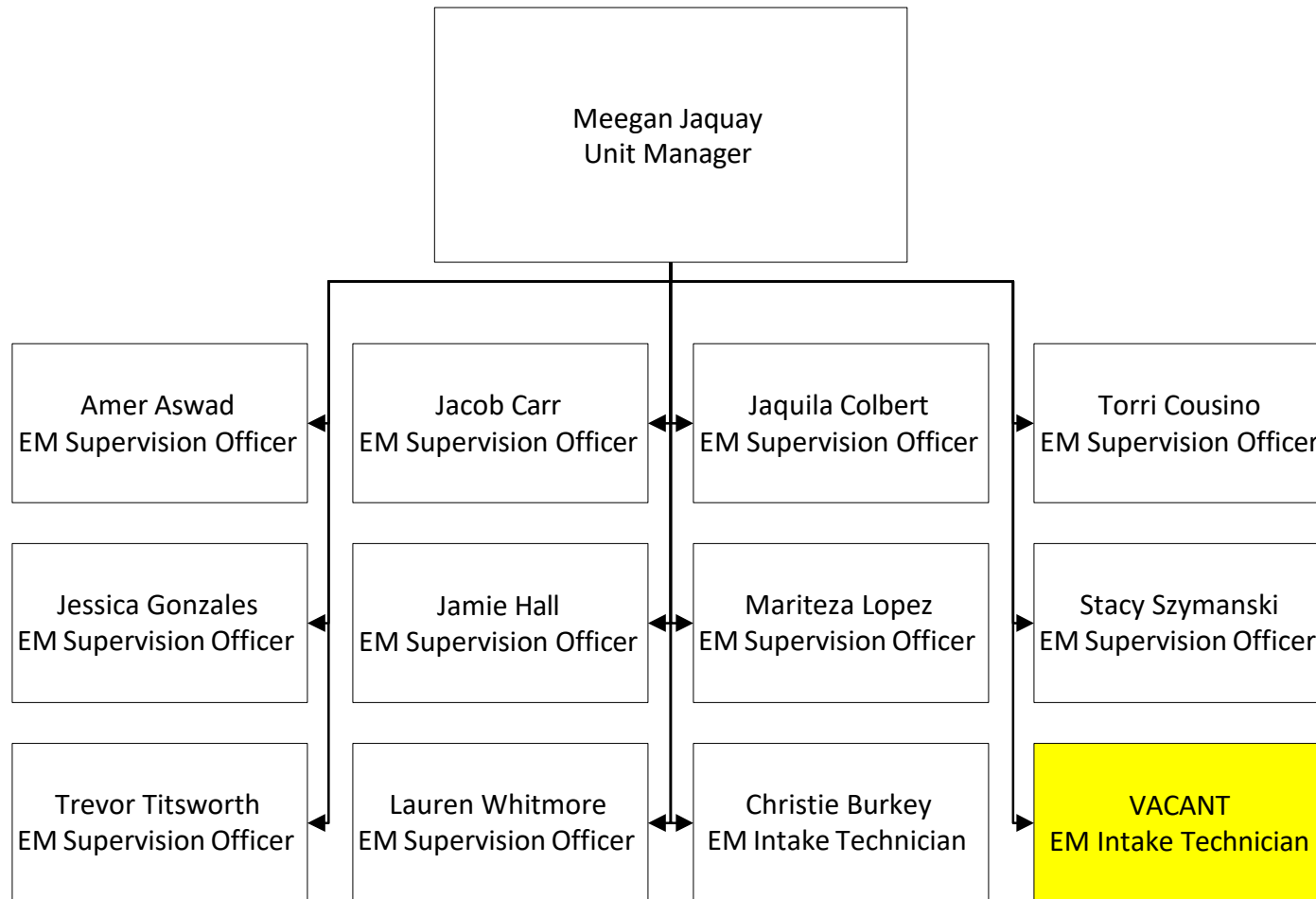


**LUCAS COUNTY COURT OF COMMON PLEAS  
TABLE OF ORGANIZATION  
REGIONAL COURT SERVICES  
PRE-TRIAL SUPERVISION**



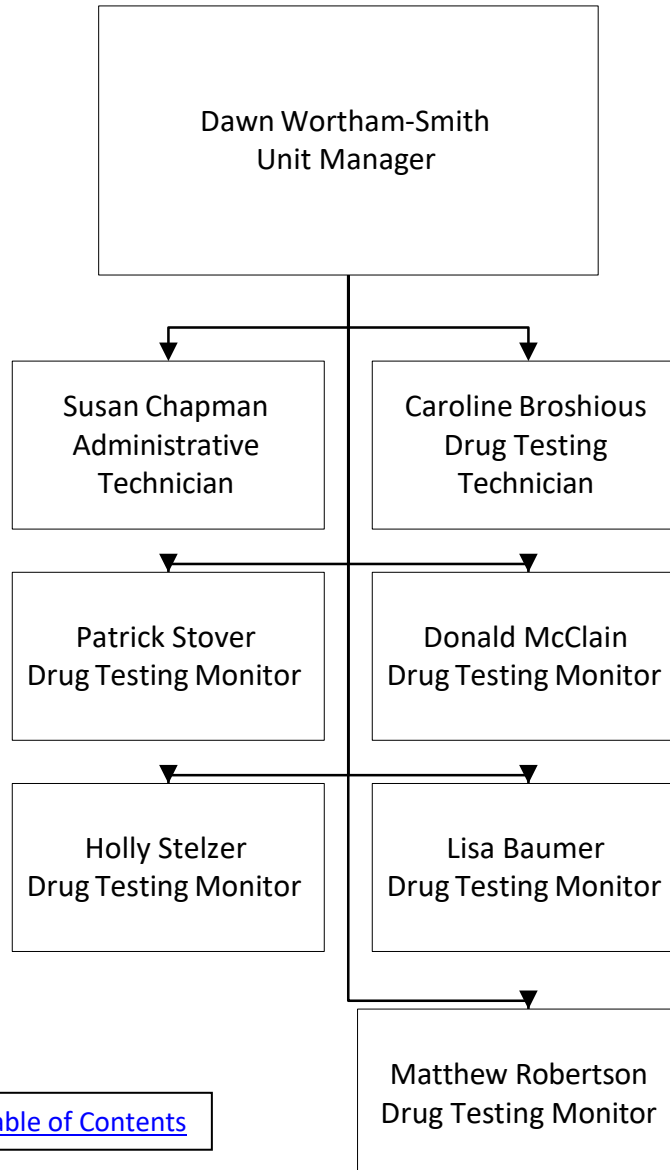
[Return to Table of Contents](#)

**LUCAS COUNTY COURT OF COMMON PLEAS  
TABLE OF ORGANIZATION  
REGIONAL COURT SERVICES  
ELECTRONIC MONITORING**



[Return to Table of Contents](#)

**LUCAS COUNTY COURT OF COMMON PLEAS  
TABLE OF ORGANIZATION  
REGIONAL COURT SERVICES  
DRUG TESTING**



[Return to Table of Contents](#)